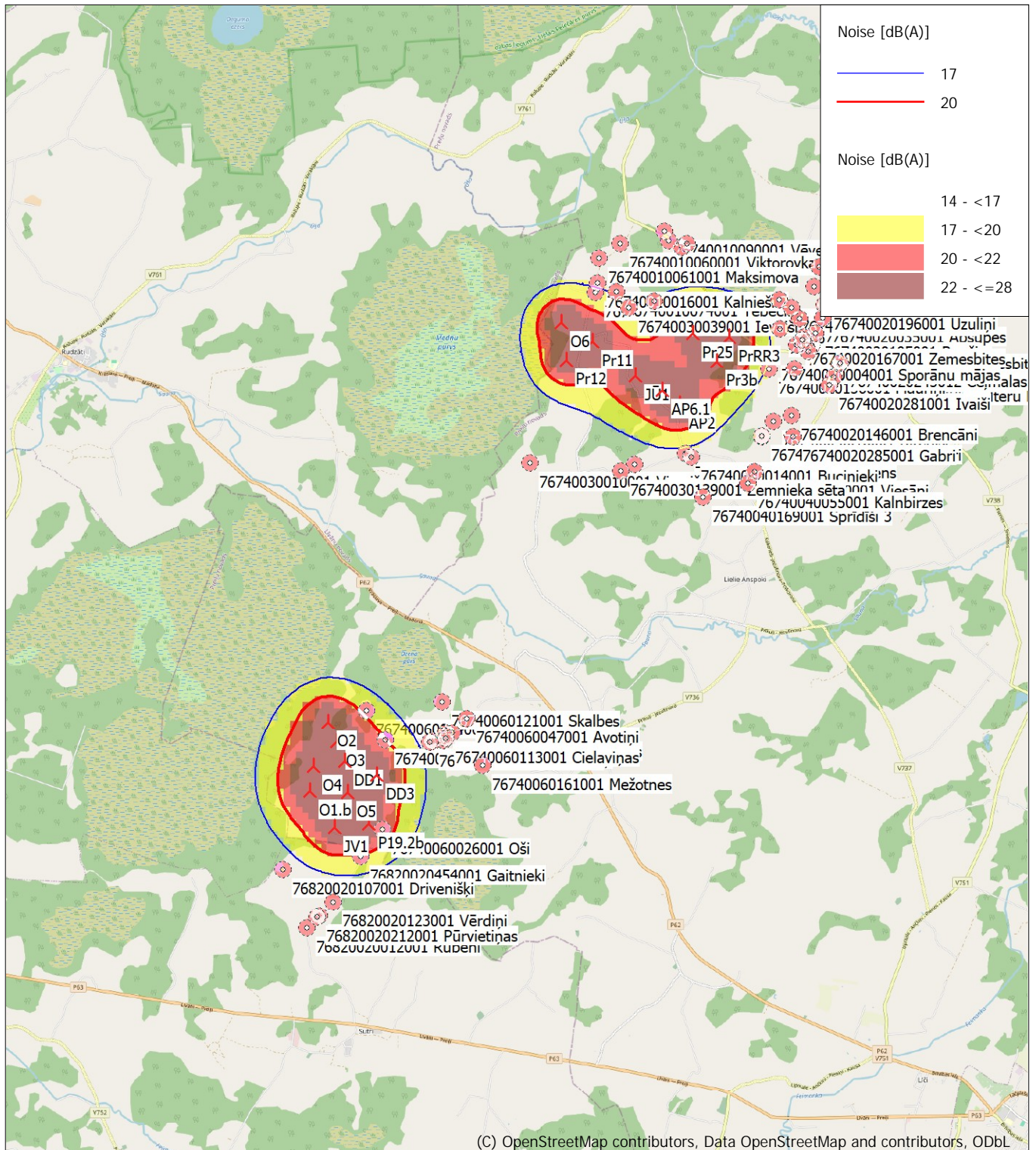


Nordex N163 B alternative

14/07/2025 5:48 pm/4.0.547

Calculation: Nordex N163-7.0 MW ST B alternative




(C) OpenStreetMap contributors, Data OpenStreetMap and contributors, ODbL

A horizontal bar divided into four equal segments of 1 km each, labeled 0, 1, 2, 3, and 4 km.

Map: EMD OpenStreetMap , Print scale 1:100,000, Map center Geo WGS84 East: 26.578066° E North: 56.383993° N

 New WTG

 Noise sensitive area

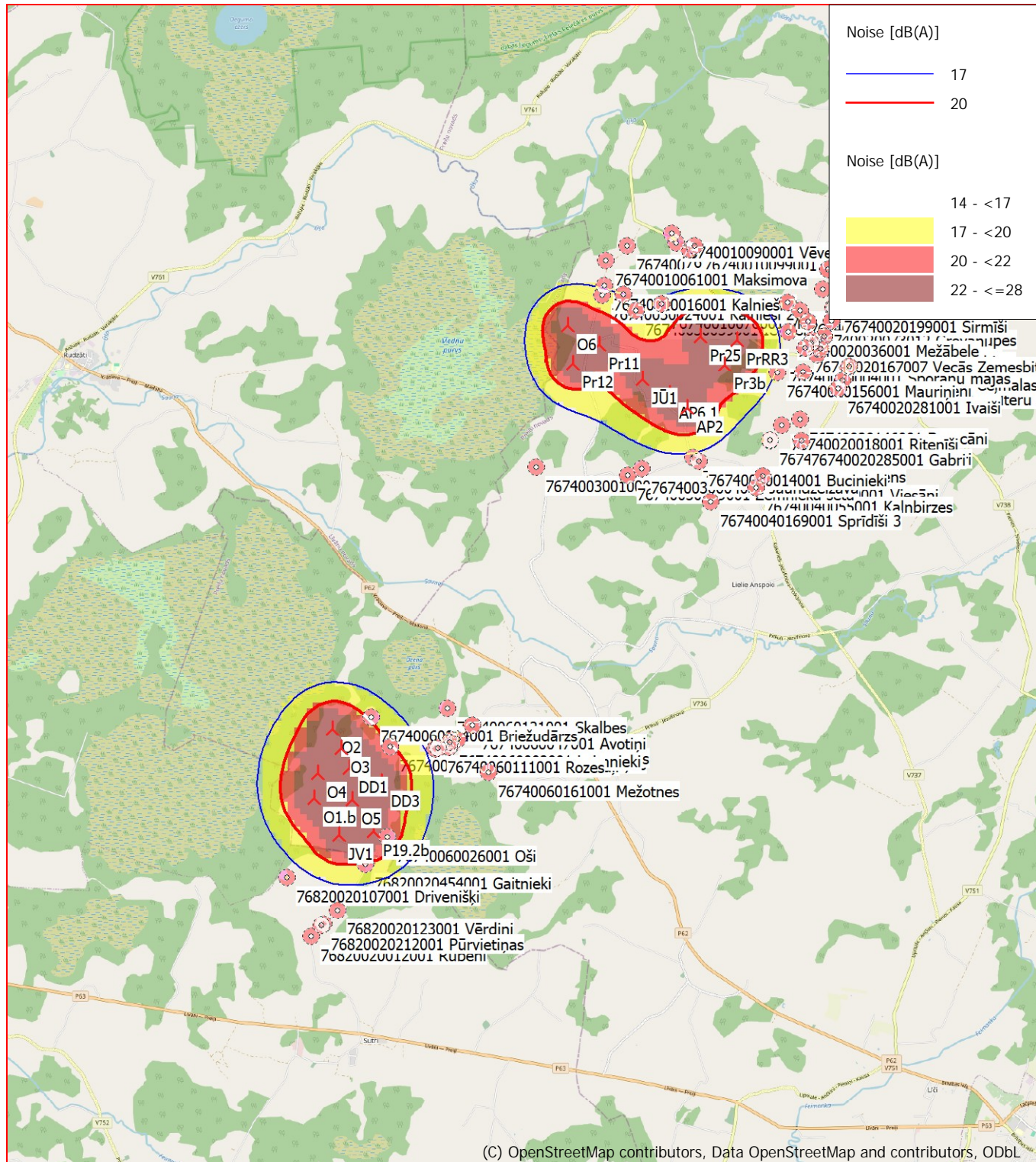
Noise calculation model: Danish low frequency 2019. Wind speed: 6.0 m/s Regular dwellings

Height above sea level from active line object



## DECIBEL - Map 8.0 m/s Regular dwellings

Calculation: Nordex N163-7.0 MW ST B alternative



0 1 2 3 4 km

Map: EMD OpenStreetMap, Print scale 1:100,000, Map center Geo WGS84 East: 26.578066° E North: 56.383993° N  
 New WTG Noise sensitive area  
 Noise calculation model: Danish low frequency 2019. Wind speed: 8.0 m/s Regular dwellings  
 Height above sea level from active line object